

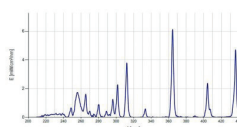
**The world
reference for
your UV curing
applications**



**The EXELSIUS medium pressure arc lamp technology offers
wide process windows owing to interchangeable UV modules
and lamp types to fit exactly with your needs**

KEY FEATURES AND BENEFITS

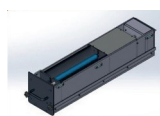
- A proven in-line curing solution
- Multi UV sources to fit your application
- Adjustable irradiance (mW/cm^2) and dose (mJ/cm^2)
- Patented UV regulation
- User friendly
- Integrated user interface on coating or dispensing equipment
- Low maintenance
- Optimized complete cost of ownership



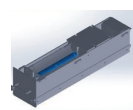
Medium pressure arc lamp spectrum



Standard UV module
curing width up to 420 mm



Short lamp UV module
curing width up to 220 mm -
30% energy saving



High intensity UV module
curing width up to 220 mm -
for applications requiring
high intensities

SPECIFICATIONS

CONVEYOR

- Type : chain with 5 mm pins
- Clearance : +/- 100 mm
- Length : 1400 mm (up to 2000 mm with options)
- Width : 50 to 420 mm
- Software controlled width adjustment
- Speed : 500 à 2850 mm/min
- Conveying height : 950 +/- 50 mm
- Maximum load : 3 Kg/m

OTHER STANDARD FEATURES & FACILITIES

- Dimensions (L x W x H) : 1400 x 1200 x 1526 mm - 2086 mm including light tower
- Approx weight : 450 kg
- Doors and safety switch
- Exhaust control
- SMEMA
- CE standards

- Top module only :

- Voltage : 400 V AC – 50/60 Hz – 3 phases
- Power rating : 7 kW
- Exhaust flow : 550 m3/h
- Exhaust diameter : 125 mm

- Top & bottom modules :

- Voltage : 400 V AC – 50/60 Hz – 3 phases
- Power rating : 14 kW
- Exhaust flow : 1100 m3/h
- Exhaust diameter : 125 mm



OPTIONS

- Close loop regulation on UV-A
- Traffic control (board drop detection)
- Board counter
- Board jam detection (inlet and outlet)
- Inlet and/or outlet shutters
- Automatic width adjustment
- Follow me width adjustment
- Right to left conveyor
- Heavy duty conveyor (8Kg/m) – max width 400 mm
- MES compatible for full traceability
- Entrance conveyor covered extension (+ 300 mm)
- Exit conveyor covered extension (+ 300 mm)
- Touch screen for UV oven monitoring
- Dual lane conveyor (same or opposite direction)
- Special arc lamp : Iron doped / Gallium doped / Synthetic glass

Some combinations are not compatible. For any further question, please contact EXELSIUS.

These specifications are not contractual