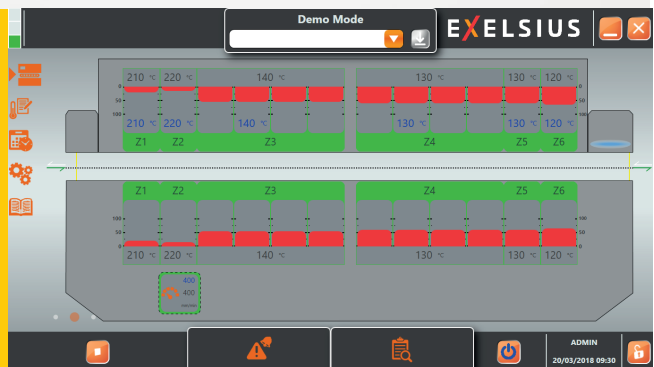


A complete range of IR ovens especially developed for curing coating materials



KEY FEATURES AND BENEFITS

- A proven in-line curing solution
- Secured solvent exhaust
- Module power regulation for all kind of thermal profiles
- Modern touchscreen
- Low maintenance with easy access
- Low energy consumption



OTHER STANDARD FEATURES & FACILITIES

A modern user interface

- Designed for users
- Intuitive for immediate ease of use
- Customizable

An open operating system allowing :

- Remote control of production lines
- Easy connection to any MES

OPC-UA



SPECIFICATIONS

CONVEYOR

- Type : Chain with 5 mm pins
- Clearance : +/- 100 mm
- Length depending on model
- Width : 50 to 450 mm
- Speed : 165 to 1100 mm/min
- Conveying height : 950 +/- 50 mm
- Maximum load : 2kg/m

OTHER STANDARD FEATURES & FACILITIES

- Voltage : 400 V AC - 50 / 60 Hz - 3 phases
- Power rating depending on model
- Exhaust diameter : 200 mm
- Exhaust flow depending on model



OPTIONS

- Low speed : 80-400 mm/min
- High speed : 300-1500 mm/min
- Extended conveyor width to 480 mm (standard 450 mm)
- Board counter
- Board drop detection
- Jam detection
- SMEMA 2
- Manual bottom heating power cut

STANDARD RANGE MODELS

	XCC 32	XCC 38	XCC 44	XCC 56
Heating length (mm)	2400	3000	3600	4800
Total length (mm)	3200	3800	4400	5600
Heating zones	6	6	6	10
Power consumption 80°C (kW/h)	4,5	5,0	5,5	7,0
Weight (kg)	1 930	2 350	2 650	3 020

These specifications are not contractual